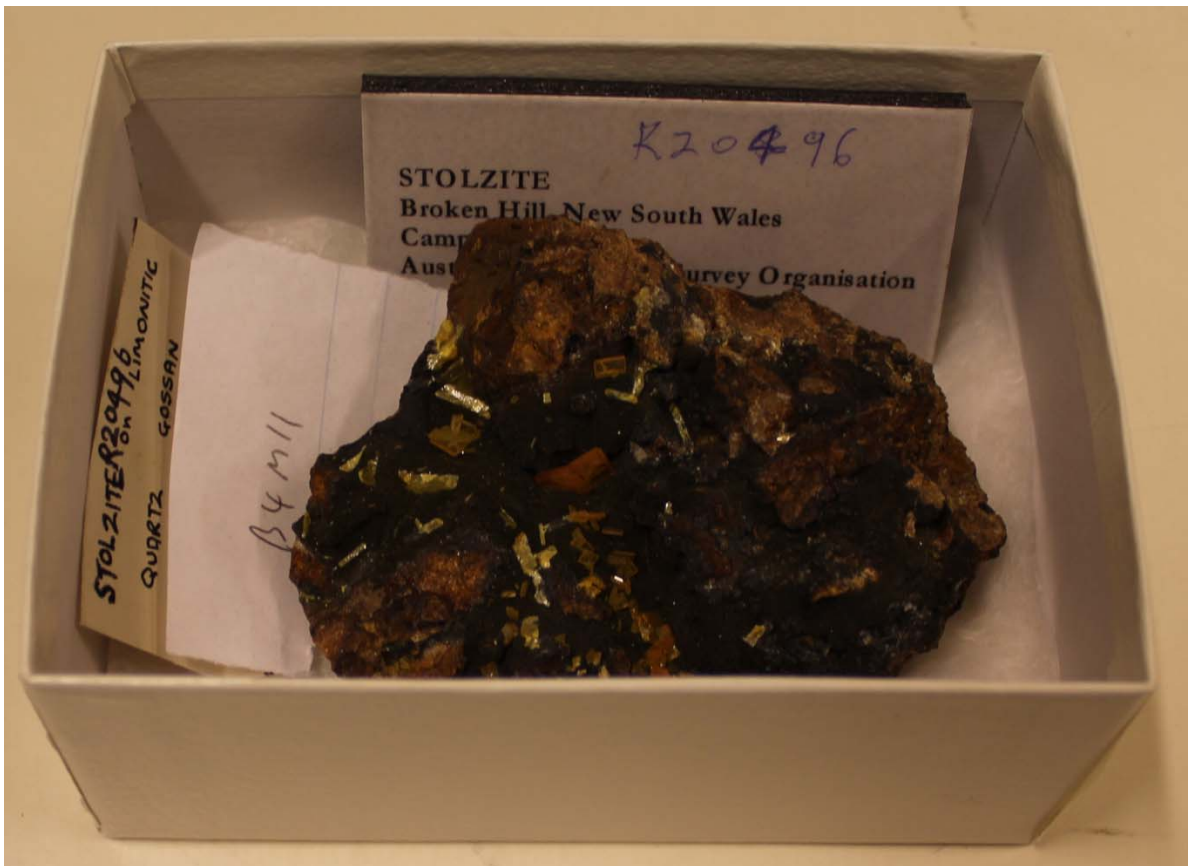


## Examples of what it is about

I thought that it might add some context to the information that is being transcribed if you could see some examples of what the information relates to. Below are some examples of the samples (and their register entries) from the current volume being transcribed.



18300	(Golden?) Feather Mine, KANOWNA, W. AUST.	30° 36' N, 121° 37' E	FUCHSITE - fine flakes in quartz.
18307	Marra Mamba fm. S.W. of HAMMERSLY, W. AUST.		Silicified Crocidolite, "Tiger-eye".
18900	...		ZINNIBERITE ...



20495	BROKEN HILL, N.S.W.			STOLZITE - sparse coarse crystals on limonite gessan	6 x 5
20496	BROKEN HILL, N.S.W. (Central Mine)			STOLZITE - tabular yellow crystals on limonite quartz gessan	8 x 7
20497	BROKEN HILL, N.S.W.			STOLZITE - fine lustre red crystals on manganese quartz gessan	7 x 5



Reg. No.	Locality	Field No.	Tsr. No.	Description	Size in cms	Value in R
20876 00000	BROKEN HILL N.S.W.			SMITHSONITE upon cerussite in cerussite matrix	26 x 9	200



23652	Broken Hill Mines, N.S.W.			Native copper	1x2 40
23652	Broken Hill Mines, N.S.W.			Azurite crystal group.	5x4 480
23652	Broken Hill Mines, N.S.W.			Enthallite crystals	2x2 400