

Geoscience Australia Slide Based Collections

Thank you for helping to unlock the valuable scientific information contained within Geoscience Australia's collection of Slides based specimens. The transcriptions will allow scientists and other researchers to discover and analyse the wealth of information contained in the slides.

Login to DigiVol

1. Go to the DigiVol portal at www.volunteer.ala.org.au
2. Click on the "Institutions" tab
3. Select Geoscience Australia – Slide based collections from the list
4. Select one of Geoscience Australia's slide based collections expeditions
5. Click on the "Get Started" tab to begin
6. Sign in using your Facebook, Twitter or Google account or by registering for a login with your email details.
7. Transcribe the page (following the tutorial below)
8. When complete, click "Submit for validation" (or, if partly complete, click "Save unfinished record")
9. Select "Transcribe another task"

Transcription Tutorial

When filling the DigiVol screen ("Transcribe All Text")

- Transcribe exactly what is on the page (following the points below)
- Anything you add should be written in square brackets [](corrections, clarifications, updated names, etc - see below for examples)
- Please check your transcription once you've finished (spelling, punctuation, formatting). This will pick up any spelling errors you may have inadvertently added (but remember to leave those made by the author).

Deletions

- If the author has crossed out a word/section, transcribe the word/s between the tags `` and ``, e.g. I ``hate`` dislike rain
- If you can't read the deleted word/s, transcribe them as [?], e.g. I ``[?]`` dislike rain

Errors and unusual spellings

- Do not correct the author's errors (spelling, punctuation, grammar, outdated species names, etc)
- Please note any suspected errors within the "Your Notes" field at the bottom of the DIGIVOL page. (Please include reference to the entry line and what was in error).

Illegible text

- If a word is illegible, transcribe it as [?]
- If multiple words are unclear, use a [?] for each word, e.g.[?] [?] [?]
- If you think you can guess the word, please indicate this in the "Your Notes" field with a reference to the entry line.

With thanks to Nicole Kearney at Museum Victoria and Jane Black at Geoscience Australia

Additional notes

These notes relate primarily to columns 2 & 3 of the Digivol entry screen.

Reading between the lines

Type	Zone	East ^s or Lat.	North ^s or Long.	Field book ref.	Air photo ref.	Hr	Day	Mth
1		3691	6088	E104	DA 3		74	76
Sc. Map name	Map no.	Depth	F/M	Collector				
2	DAJARRA	6854		RJB				
F/P Strat. Unit								

This series of cards has been structured with heavy makes to indicate the start and finish of a field. The information contained between 2 heavy marks should be entered into the corresponding field.

Air photo ref.	DAJA/08/44
Air photo Ref.	DAJA/08/44
Depth	
F/M Collector	
Map Name	

Reg'd No.

Please include the full information. For the example below you would enter "79530023B"

79530023B
Reg'd No.
Fn Typ

Where multiple Reg'd No. entries are listed please include the first one as above and ensure that all are listed at the start of the "Transcribe All Text" field (separated by ",")

79630023	KD.
Reg'd No.	
29 KD	Fn Typ
29 KD	1
32 KD	
32 KD	2
32 KD	
33 KD	
34 KD	3
34 KD-3	
36 KD	4
36 KD-1	
39 KD	5
39 KD	

unchcard operator to repeat
eg'd No. on each card

Locality

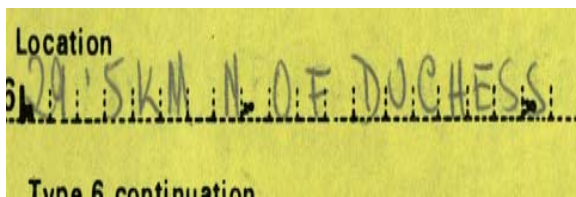
The location that a sample was taken from is very important to any subsequent analysis.

- Air Photos
 - These photographs date from as early as 1928.

Before GPS field parties would identify the location of a sample site using the visible land marks on the relevant Air photograph (these started being taken in 1928) and would make the site by driving a pin through the image. Relevant information would then be written on the back of the photo.

Location

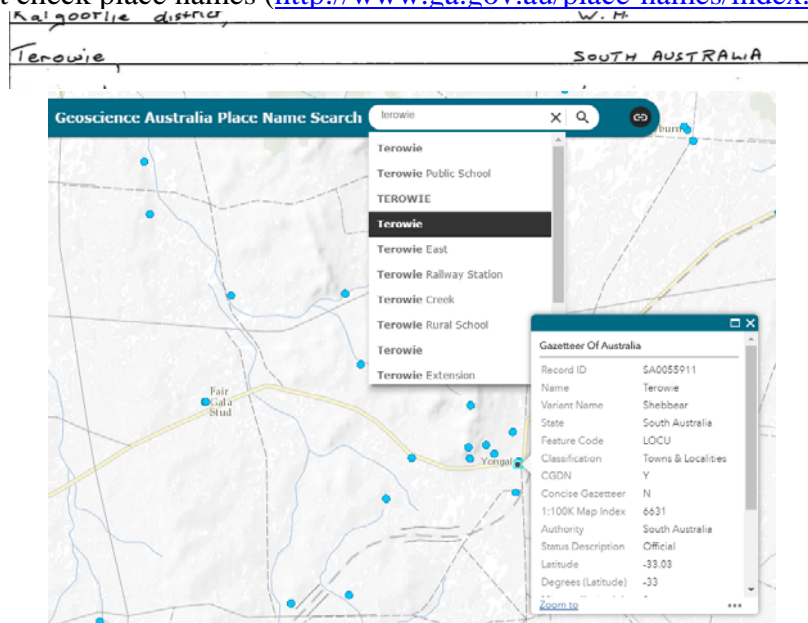
This field should be transcribed as is



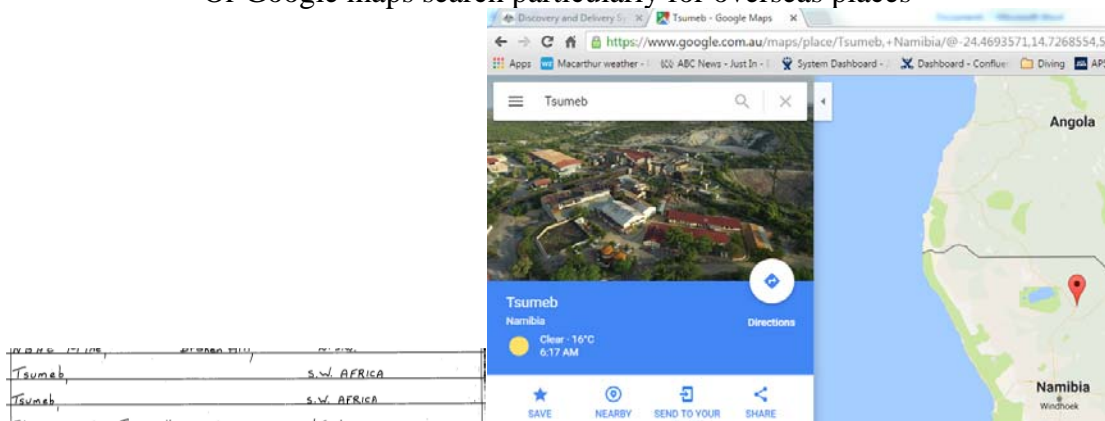
Locality	29.5 km N of Duchesse
----------	-----------------------

Place Names (Within "Location")

- Transcribe place names within the column "Locality description"
- If in doubt check place names (<http://www.ga.gov.au/place-names/index.shtml>)



Or Google maps search particularly for overseas places



Abbreviations