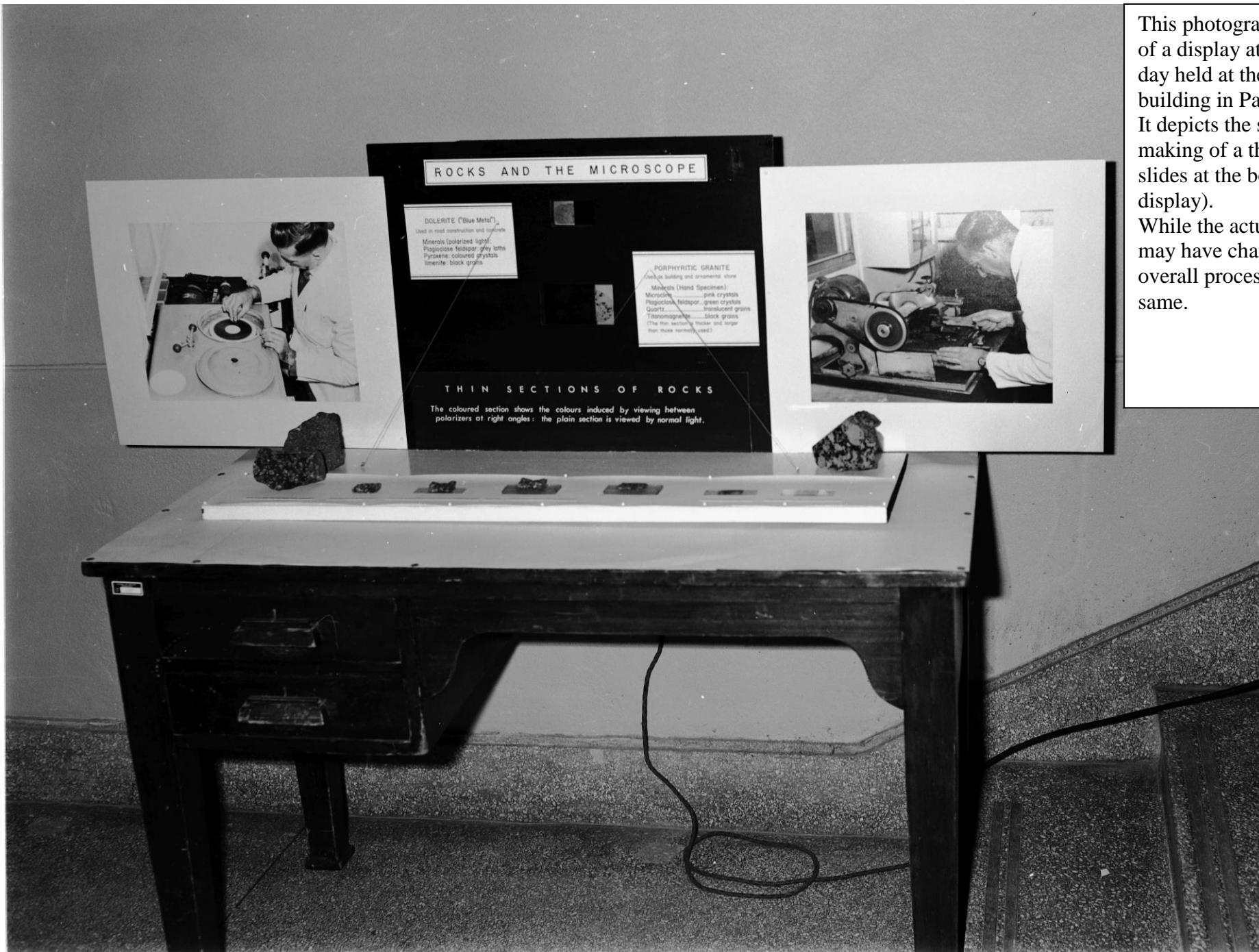


**The historic making of Thin Sections within Bureau of Mineral Resources (BMR)
(Geoscience Australia)**



This photograph was taken of a display at the 1971 Open day held at the BMR building in Parks ACT. It depicts the stages in the making of a thin section (6 slides at the bottom of the display). While the actual machines may have changed the overall process is still the same.

Figure 1 - Open Day, BMR Canberra (Parks) 3 June 1971 (Photo by J.E. Zawartko) (Ref GA/4814)

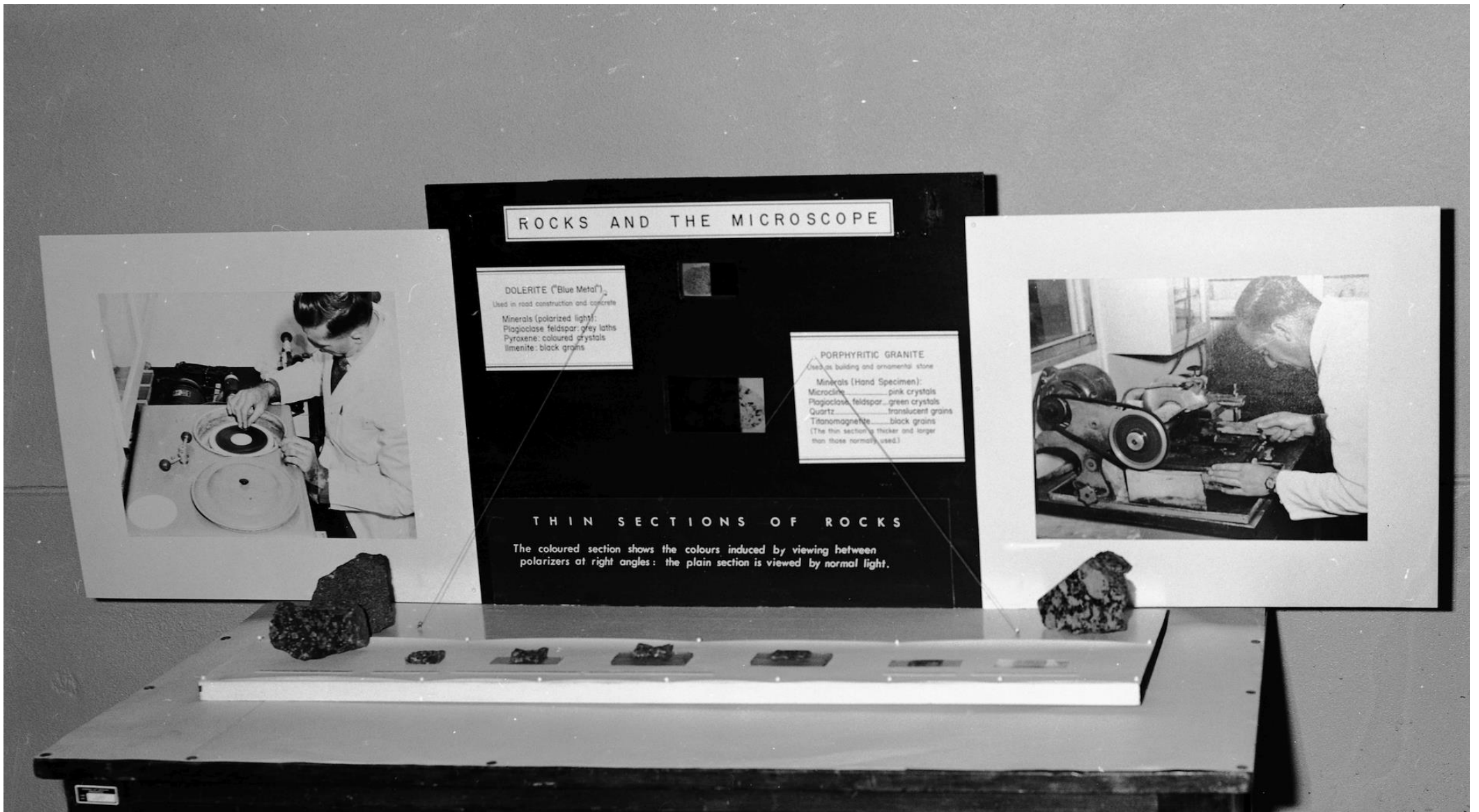


Figure 2 - Open Day, BMR Canberra (Parks) 3 June 1971 (Photo by J.E. Zawartko) (Ref GA/4814)