

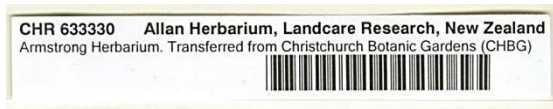
## Specimens in the Armstrong Herbarium

- The data on the specimens is often minimal, so for any particular specimen not all fields will be required
- Handwriting may be illegible or difficult to read. Please indicate illegible writing by inserting [illegible] in square brackets
- Please transcribe the information as it appears on the label. If you have extra knowledge regarding the information, please enter this into the Transcribers Notes

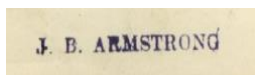
## Do not Transcribe

There is no need to transcribe:

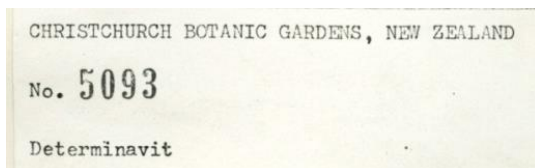
- information on the “modern” label with the CHR number and barcode



- “Poison”
- J.B. Armstrong blue stamped label



- “Christchurch Botanic Gardens, New Zealand” or “Determinavit” from Garden labels - only the Garden No. is required.

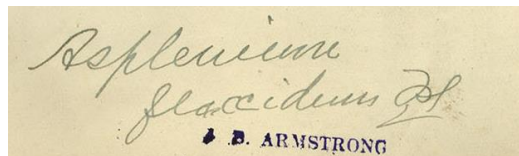


## Identifications

- Specimens usually contain one or more identifications.
  - These are frequently not signed (so the determiner is not stated)
  - They are often also not dated.
  - Assume that the oldest determinations are at the bottom right.
  - Authorities (after the name) are often underlined  
e.g. *Asplenium hookerianum* Col



e.g. *Asplenium flaccidum* Fst



- To work out NZ species names try searching in <http://nzflora.landcareresearch.co.nz>

## Collection Events

- There is sometimes more than one collection on a sheet.
- If there is a second Collection Event, please tick the 'Another Collection Event?' box and enter the information into the 'Other information' field.
- Transcribe the Collection Event with the label closest to the Botanic Garden label and the 'modern' CHR label, into the normal fields

The diagram illustrates the process of transcribing collection events from handwritten notes to typed labels. It features three main handwritten labels and three typed labels, all enclosed in green boxes. Arrows indicate the flow of information:

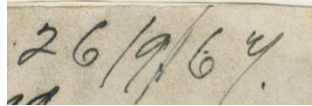
- Collection Event 2** (top left): A handwritten label with the text "Grey Valley", "acerosa", "Cyathodes aw.", and "Grey Valley Mt". An arrow points from this label to the "Other information" field of the typed label below it.
- Collection Event 1** (bottom left): A handwritten label with the text "Cyathodes eupetiolata", "Cobden Mt", and "Oct 1869". An arrow points from this label to the "normal fields" of the typed label below it.
- Botanic Garden label** (middle): A typed label with the text "CHRISTCHURCH BOTANIC GARDENS, NEW ZEALAND", "No. 6230", and "Determinavit". An arrow points from this label to the "normal fields" of the typed label below it.
- 'modern' CHR label** (top right): A typed label with the text "CHR 634547", "Allan Herbarium, Landcare Research, New Zealand", "Armstrong Herbarium. Transferred from Christchurch Botanic Gardens (CHBG)", and a barcode. An arrow points from this label to the "normal fields" of the typed label below it.

The typed labels are arranged vertically. The top label is the "modern" CHR label. Below it is the Botanic Garden label. Below that is the typed label for Collection Event 1, which includes the word "POISON" in red. At the bottom is the typed label for Collection Event 2, which includes the text "Collection Event 2 – transcribe into 'Other information' field".

## Dates

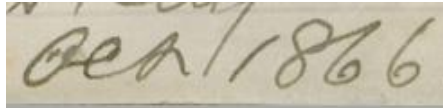
- Please enter dates as they appear on the specimen

e.g.

A small rectangular image showing a handwritten date '26/9/67' in cursive on aged paper.

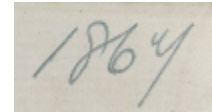
26/9/67

e.g.

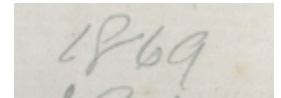
A small rectangular image showing a handwritten date 'Oct 1866' in cursive on aged paper.

Oct 1866

- Please note the difference between 1867  
as they can easily be confused.

A small rectangular image showing a handwritten year '1867' in cursive on aged paper.

and 1869

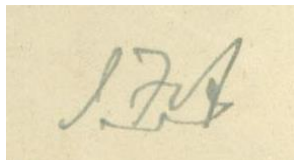
A small rectangular image showing a handwritten year '1869' in cursive on aged paper.

## Handwriting Interpretation – People

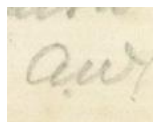
please transcribe as it appears on the label

A small rectangular piece of aged, yellowish paper with the handwritten initials 'JBA' in dark ink. The letters are cursive and somewhat slanted.

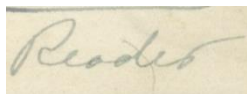
Joseph Beattie Armstrong.  
Enter as: JBA

A small rectangular piece of aged, yellowish paper with the handwritten initials 'J.F.A' in dark ink. The letters are cursive and clearly separated.

John Francis Armstrong  
Enter as: J.F.A

A small rectangular piece of aged, yellowish paper with the handwritten initials 'A.W.' in dark ink. The letters are cursive and slightly overlapping.

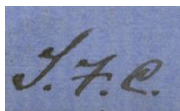
Arnold Wall  
Enter as: A.W.

A small rectangular piece of aged, yellowish paper with the handwritten word 'Reader' in dark ink. The word is written in a cursive script.

FM Reader  
Enter as: Reader

A small rectangular piece of aged, yellowish paper with the handwritten initials 'T Kirk' in dark ink. The letters are cursive and clearly legible.

Thomas Kirk  
Enter as: T Kirk

A small rectangular piece of blue paper with the handwritten initials 'T.F.C.' in dark ink. The letters are cursive and clearly legible.

Thomas Frederick Cheeseman  
Enter as: T.F.C.

## For additional research

- Ngā Tipu o Aotearoa – New Zealand Plants  
<http://nzflora.landcareresearch.co.nz/default.aspx?NavControl=search&selected=NameSearch>
- Allan Herbarium Specimen Database – search for collectors or localities  
<https://scd.landcareresearch.co.nz/>
- New Zealand Botanists  
<http://www.landcareresearch.co.nz/resources/collections/allan-herbarium/new-zealand-botanists>
- New Zealand Official Place Names <http://www.linz.govt.nz/placenames/find-names/nz-gazetteer-official-names/nzgb-gazetteer#zoom=0&lat=-41.14127&lon=172.5&layers=BTT>

1<sup>st</sup> Identification – Taxon: *Veronica rakaiensis*

Do not transcribe

CHR 635876 Allan Herbarium, Landcare Research, New Zealand  
Armstrong Herbarium. Transferred from Christchurch Botanic Gardens (CHBG)



*Veronica rakaiensis*

Rakaia

JBA

Locality: Rakaia

Collector: JBA



Catalog Number (read only)

Botanic Garden Number: 5093

Collector's Notes: 6 to 12 [illegible], Fronds tufted

1st Identification – Taxon: *Asplenium hookerianum* Col

Locality: Bank's Peninsula

Altitude: 2000 ft

Do not transcribe  
J. B. ARMSTRONG

Do not transcribe  
"POISON"

Collector: JBA

Do not transcribe

CHR 633330 Alan Herbarium, Landcare Research, New Zealand  
Armstrong Herbarium Transferred from Christchurch Botanic Gardens (CHBG)



CHRISTCHURCH BOTANIC GARDENS, NEW ZEALAND

No. 5093

Determinavit

6 to 12 inches  
Fronds tufted

*Asplenium*  
*hookerianum* Col

Bank's Peninsula

2000ft

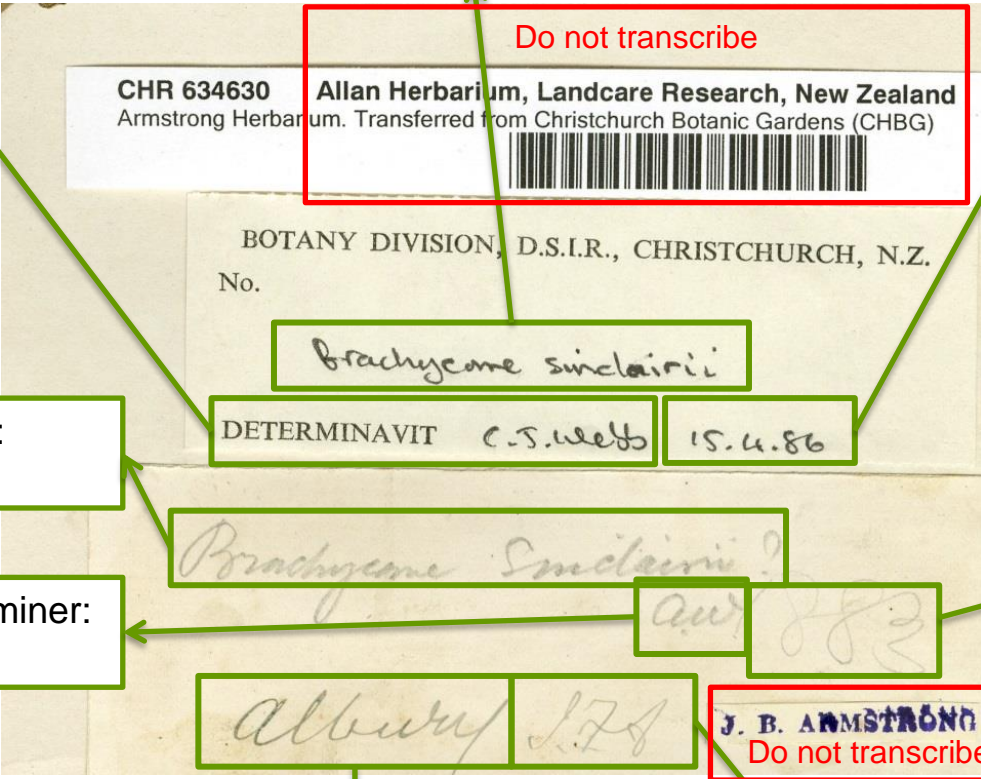
JBA



2<sup>nd</sup> Identification – Determiner:  
C.J. Webb

2<sup>nd</sup> Identification – Taxon:  
Brachycome sinclairii

2<sup>nd</sup> Identification – Date identified:  
15.4.86



Do not transcribe

BOTANY DIVISION, D.S.I.R., CHRISTCHURCH, N.Z.

No.

Brachycome sinclairii

DETERMINAVIT C.S. Webb

15.4.86

Brachycome sinclairii?

Albury 178

Albury 178

J. B. ARMSTRONG  
Do not transcribe

1<sup>st</sup> Identification – Taxon:  
Brachycome sinclairii ?

1<sup>st</sup> Identification – Determiner:  
A.W.

Date Collected: 1883

Locality: Albury

Collector: JFA

3<sup>rd</sup> Identification – Taxon:  
A. fulvum Raoul

3<sup>rd</sup> Identification – Date identified:  
18/11/83

Botanic Garden Number: 5093

Do not transcribe  
CHR 633293 Allan Herbarium, Landcare Research, New Zealand  
Armstrong Herbarium. Transferred from Christchurch Botanic Gardens (CHBG)

3<sup>rd</sup> Identification – Determiner:  
M Large

CHRISTCHURCH BOTANIC GARDENS, NEW ZEALAND  
No. 5219  
Determinavit

2<sup>nd</sup> Identification – Notes:  
Tufted

Tufted

HERBARIUM, UNIVERSITY OF AUCKLAND, NEW ZEALAND.

*A. fulvum* Raoul.

DETERMINAVIT M Large.

18/11/83

Do not transcribe  
"POISON"

*A. pubescens* Skur  
? affine

near Akaroa 1864 J.F.A.

Do not transcribe  
J. B. ARMSTRONG

*Adiantum fulvum* Raoul

Locality: near Akaroa

Date collected: 1864

Collector: JFA

2<sup>nd</sup> Identification – Taxon:  
*A. pubescens* Skur

Other information:  
? affine

1<sup>st</sup> Identification – Taxon:  
*Adiantum fulvum* Raoul