

Geoscience Australia Slide Based Collections

Thank you for helping to unlock the valuable scientific information contained within Geoscience Australia's collection of Slides based specimens. The transcriptions will allow scientists and other researchers to discover and analyse the wealth of information contained in the slides.

Login to DigiVol

1. Go to the DigiVol portal at www.volunteer.ala.org.au
2. Click on the "Institutions" tab
3. Select Geoscience Australia – Slide based collections from the list
4. Select one of Geoscience Australia's slide based collections expeditions
5. Click on the "Get Started" tab to begin
6. Sign in using your Facebook, Twitter or Google account or by registering for a login with your email details.
7. Transcribe the page (following the tutorial below)
8. When complete, click "Submit for validation" (or, if partly complete, click "Save unfinished record")
9. Select "Transcribe another task"

Transcription Tutorial

Auto complete text

A number of fields on the template will offer possible alternatives.

Strat. Unit	
Geol. age	early
Rock Name/Sample Type	Early Cambrian
Date submitted	Early Cretaceous
	Early Devonian
	Early Jurassic
Originator	Early Mississippian
Daybook entry	Early Ordovician
Minerag./Mineral	Early Pennsylvanian
Chem analysis	Early Permian
Palaeontology	Early Silurian
	Early Triassic

If the text you need is not listed simply type the required text in and move on to the next field. This text may then be added to the overall list of options.

Deletions

- If the author has crossed out a word/section, transcribe the word/s between the tags `` and ``, e.g. I ``hate`` dislike rain
- If you can't read the deleted word/s, transcribe them as `[?]`, e.g. I ``[?]`` dislike rain

Errors and unusual spellings

- Spelling of some geological words has changed over time. Please enter the correct spelling.
- Please note any suspected errors within the "Your Notes" field at the bottom of the DIGIVOL page. (Please include reference to the entry line and what was in error).

Illegible text

- If a word is illegible, transcribe it as [?]
- If multiple words are unclear, use a [?] for each word, e.g.[?] [?] [?]
- If you think you can guess the word, please indicate this in the “Your Notes” field with a reference to the entry line.

Basic functions



This series of buttons (located in the bottom left of the image) allows you to enlarge (+), reduce (-) and to reposition the image (using the four arrows).



This button (Show image in a separate window) (located bottom right of the image) creates a new window with the image of the item being transcribed.



This button (Fix the image in place in the browser window) (located bottom right of the image) fixes the space within the one window that is allocated to both the image and transcription fields on the screen. This means that you can scroll up and down (and in / out) of either section of the screen independently of the other.

Copy values from a previous task

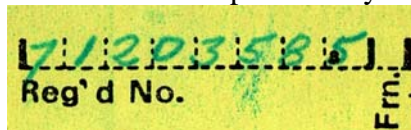
This button allows you to copy data from a previously entered task. This can be useful where similar data is repeated from task to task.

With thanks to Nicole Kearney at Museum Victoria and Jane Black at Geoscience Australia

Additional notes

Reg'd No.(Top left of card)

Please include the full information. For the example below you would enter “71203585”



When the “Frn” field has been completed please enter this into the separate field

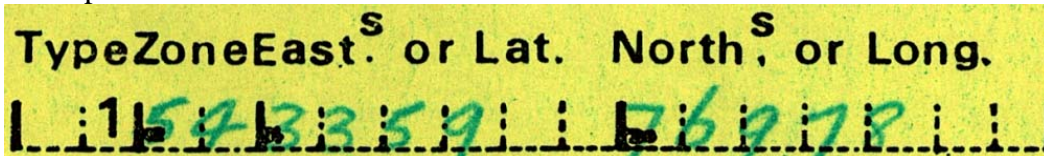
Locality

The location that a sample was taken from is very important to any subsequent analysis.

- Air Photos
 - These photographs date from as early as 1928.

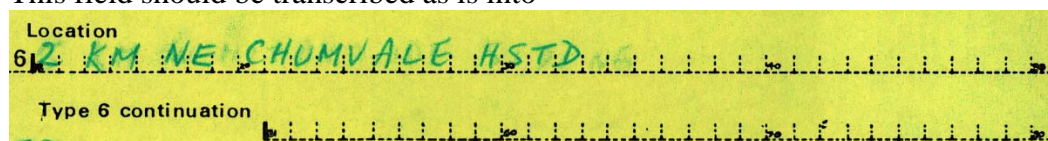
Before GPS field parties would identify the location of a sample site using the visible land marks on the relevant Air photograph (these started being taken in 1928) and would make the site by driving a pin through the image. Relevant information would then be written on the back of the photo.

- Sample Co-ordinates
 - The coordinate system used varied between Latitude/Longitude and a number of grid based approaches. Please simply transcribe the text verbatim into the corresponding fields provided



Easting/Latitude from label ?
North/Longitude from label ? Coordinate Zone

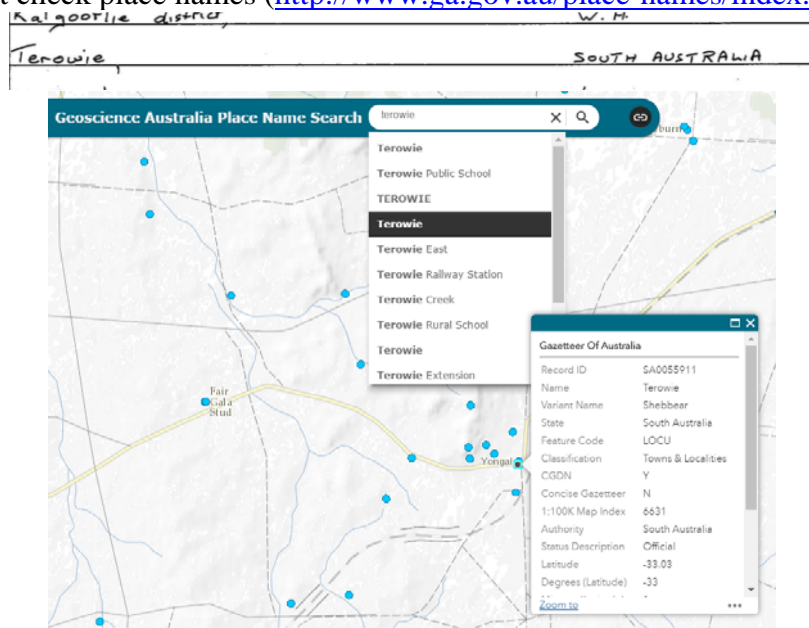
- Location
This field should be transcribed as is into



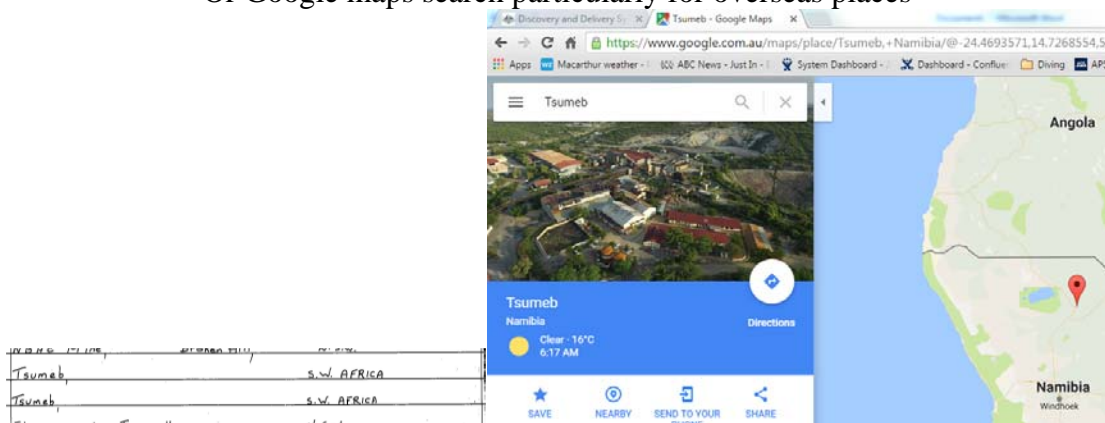
Locality ?

Place Names (Within “Location”)

- Transcribe place names within the field “Location”
- If in doubt check place names (<http://www.ga.gov.au/place-names/index.xhtml>)



Or Google maps search particularly for overseas places



Work Required Area

- This section of the form was used to indicate what follow on work was required from the sample.

Date Submitted	5 / 12 / 69	Work required	
T.S./Petrog	<input type="checkbox"/>		
Minerag/Mineral	<input checked="" type="checkbox"/>	Electron probe analysis	
Sedimentology	<input type="checkbox"/>		
Chem anal	<input checked="" type="checkbox"/>	Part in the BMR, part in AMDEL (list attached)	
Age det	<input type="checkbox"/>		
Micropal	<input type="checkbox"/>		Originator
Macropal	<input type="checkbox"/>		Supervisors initials
			Daybook entry
			A. Glikson
			3403 M(pf)III

- Please use the check boxes where this is indicated on the image.
- If text is associated with a check box please enter the text in the corresponding text field (to the right of the check box)

Minerag/Mineral
Sedimentology
Chem analysis

- Work Required - Minerag/Mineral
- Work Required - Sedimentology
- Work Required - Chem Analysis

Electron probe analysis
Part in the BMR, part in AMDEL (list attached)