

Geoscience Australia Slide Based Collections

Thank you for helping to unlock the valuable scientific information contained within Geoscience Australia's collection of Slides based specimens. The transcriptions will allow scientists and other researchers to discover and analyse the wealth of information contained in the slides.

Login to DigiVol

1. Go to the DigiVol portal at www.volunteer.ala.org.au
2. Click on the "Institutions" tab
3. Select Geoscience Australia – Slide based collections from the list
4. Select one of Geoscience Australia's slide based collections expeditions
5. Click on the "Get Started" tab to begin
6. Sign in using your Facebook, Twitter or Google account or by registering for a login with your email details.
7. Transcribe the page (following the tutorial below using the spreadsheet tool)
8. When complete, click "Submit for validation" (or, if partly complete, click "Save unfinished record")
9. Select "Transcribe another task"

Obtaining the Loading Spreadsheet

Please contact [John Pring](#) to obtain the spreadsheet to assist in transcribing the register information. It is recommended that you save a blank copy of the template and work from a blank template when starting a new task.

Transcription Tutorial

1. When filling in the Spreadsheet

- Transcribe exactly what is on the page (following the points below)
- It is recommended that you save the spreadsheet template before beginning and commence each new task with a new copy.
- Anything you add should be written in square brackets [] (corrections, clarifications, updated names, etc - see below for examples)
- Please check your transcription within the spreadsheet once you've finished (spelling, punctuation, formatting). This will pick up any spelling errors you may have inadvertently added (but remember to leave those made by the author).
- Once you are comfortable that you have captured the task in the spreadsheet please copy all of the red cells (to the right of where you just entered) into the "Verbatim text" panel.

Deletions

- If the author has crossed out a word/section, transcribe the word/s between the tags `` and ``, e.g. I ``hate`` dislike rain
- If you can't read the deleted word/s, transcribe them as `[?]`, e.g. I ``[?]`` dislike rain

These crossed out entries were often done to indicate a missing or destroyed sample and that it had been written off during a stocktake. At times these samples have subsequently been found.

Errors and unusual spellings

- Do not correct the author's errors (spelling, punctuation, grammar, outdated species names, etc)
- Please note any suspected errors within the "Your Notes" field at the bottom of the DIGIVOL page. (Please include reference to the entry line and what was in error).

Illegible text

- If a word is illegible, transcribe it as [?]
- If multiple words are unclear, use a [?] for each word, e.g.[?] [?] [?]
- If you think you can guess the word, please indicate this in the "Your Notes" field with a reference to the entry line.

Insertions

- If the author has inserted text into a sentence with an ^ sign (or similar), incorporate this text into the transcription without the indicator ^

Notes in the margin

- Where one or more lines have been annotated this should be captured by including the annotation within either the referred cell (where only one cell appears to be annotated) or where the annotation appears to refer to the entire row the annotation should be added to the end of the largest cell. In either case please identify this text by typing it between the tags `<note>` and `</note>`

| | | |
|-------|----------------------------|--------|
| 30119 | | MEXICO |
| 30120 | Broken Hill | N.S.W. |
| 30121 | Mt Tom Price (CoR) | WA |
| 30122 | Mt Nathaniel (SHP) | WA |
| 30123 | Savage River | TAS |
| 30124 | Goondiella | QLD |
| 30125 | Blairathol | QLD |
| 30126 | Bayswater No.3 | NSW |
| 30127 | Croote Eylandt | NT |
| 30128 | Yielda (Bauxite) | QLD |
| 30129 | Yielda (Kaolin) | QLD |
| 30130 | Kambalda Nickel Mines (Ni) | WA |
| 30131 | Mt Keith (Ni) | WA |
| 30132 | Acnew (Ni) / Perseverance | WA |
| 30133 | Broken Hill (Ag, Pb, Zn) | NSW |
| 30134 | Mt Isa (Pb, Zn, Ag) | QLD |
| 30135 | Cannington (Ag, Pb, Zn) | QLD |

With thanks to Nicole Kearney at Museum Victoria and Jane Black at Geoscience Australia

Additional notes

- Assumed ditto. Where the author has left space in subsequent line(s) please repeat the information in those subsequent line(s) when transcribing it.

| | |
|-----|--------------------------------|
| 001 | Coxs Mine, Broken Hill, N.S.W. |
| 002 | Broken Hill, N.S.W. |
| 003 | |

- Where text is in the far right of the previous column and belongs to the following column include in that following column

| | | | |
|--------|--------|-----|--|
| cimens | | 400 | |
| weight | 0.27ct | 500 | |
| weight | 0.18ct | 650 | |

| | | |
|--------|--------|--|
| cimens | | |
| weight | 0.27ct | |
| weight | 0.18ct | |

recorded as

Age Column

For a small amount of the register there is a hand written "Age" column added and only filled in occasionally.

Any information contained in this column should be included in the "Description" field when completing the spreadsheet

| ty | Age | Description |
|-----------------|-------------------------------|------------------------|
| via Tasmania | ?Devonian Lower Palaeozoic | Granodionite Schist |

This should be recorded as:

| Description |
|---------------------------|
| Granodionite - ?Devonian |
| Schist - Lower Palaeozoic |

Locality

The location that a sample was taken from is very important to any subsequent analysis.

Air Photos

- This should be recorded within the tags in the 2 columns provide within the spreadsheet. For the example below
 - Photo Run K2/5081
 - Phot point PT6073

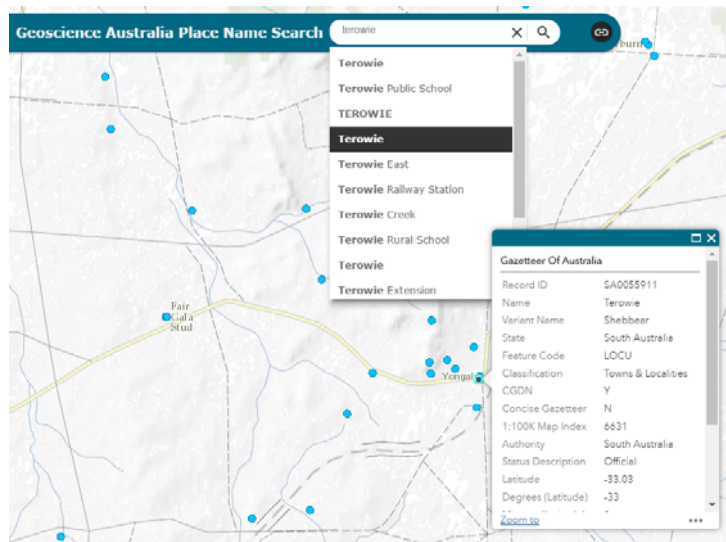
| | | |
|------------------|------------------|-----------------------------|
| N.T. KULGERA 4ML | K2/5081 PT.6073 | KERNOT RANGE |
| | K1/5093 PT. 6081 | 12 MLS. WEST OF ANGAS DOWNS |
| | K2/5081 PT. 6102 | 8 MLS. S.W. OF ANGAS DOWNS |

Before GPS field parties would identify the location of a sample site using the visible land marks on the relevant Air photograph and would make the site by driving a pin through the image. Relevant information would then be written on the back of the photo.

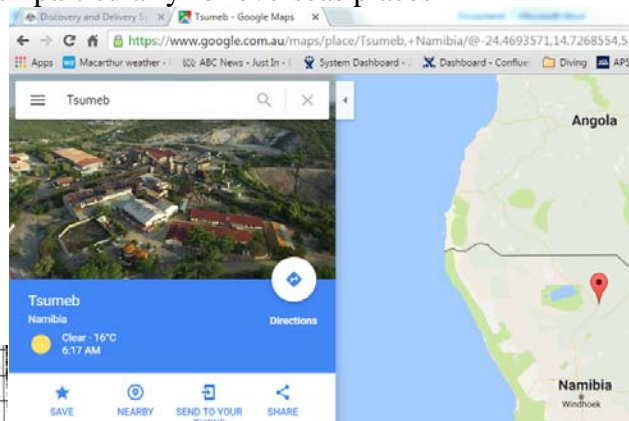
Place Names

- Transcribe place names within the column "Locality description"
- If in doubt check place names (<http://www.ga.gov.au/place-names/index.xhtml>)

| | |
|---------------------|-----------------|
| Kalgoorlie district | W. M. |
| Terowie | SOUTH AUSTRALIA |



Or Google maps search particularly for overseas places



| IN D.H.C. 171/106 | PERSON FILE | RELATION |
|-------------------|-------------|-------------|
| Tsumeb | | S.W. AFRICA |
| Tsumeb | | S.W. AFRICA |

Box number.

- In some parts of the documents a box number has been entered. These additional numbers usually appear in the “Reg. No.” column but may appear to either the right or left of the actual Reg. No. The box number where it exists should be captured in the “Box No.” entry field

| Reg. No. | Box | Reg. No. |
|------------|-----|------------|
| R 101.2878 | 7 | 2633 R 256 |
| R 102 " | | 2632 R 257 |
| R 103 " | | 2633 R 258 |
| R 104 " | | 41758 259 |
| R 105 609 | | 2603063 |
| R 106 3873 | | 2613061 |
| R 107 " | | 2623063 |
| R 108 " | | 2633063 |
| R 109 " | | 2643063 |
| | | 2653063 |

Variation in Column headings.

- Column headings vary slightly between volumes. Please ensure that you are entering information in the correct column.

| Reg. No. | Locality | Field No. | Tr. No. | Description | Sender and Date | Cab. No. |
|----------|----------|-----------|---------|-------------|-----------------|----------|
| 15546 | | | | | | |

| REG. NO. | LOCALITY | DESCRIPTION | SIZE | VALUE | SENDER AND DATE | CAB NO |
|----------|----------|-------------|------|-------|-----------------|--------|
| 30001 | | | | | | |

The meaning of things

Various codes and short had annotations have been used within the documents.

Position/Locality

Many of the records contained within the documents predate the advent of satellite navigation such as GPS. The position would be referred to via reference to maps, aerial photographs, and distances from known or identifiable places

N.T. KULGERA 4ML K2/5081 PT.6073 KERNOT RANGE
K1/5093 PT. 6081 12.MLS. WEST OF ANGRAS DOWNS
K2/5081 PT. 6102 8 MLS. S.W. OF ANGRAS DOWNS

Figure 1- State/Territory and map sheet

NT Kulgera 4ML refers to a particular state/territory and map sheet.

N.T. KULGERA 4ML K2/5081 PT.6073 KERNOT RANGE
K1/5093 PT. 6081 12.MLS. WEST OF ANGRAS DOWNS
K2/5081 PT. 6102 8 MLS. S.W. OF ANGRAS DOWNS

Figure 2 - Photo Run and Photo Point

This sequence refers to a particular aerial photograph run (K2/5081) and a pin point on that particular photo. The practice was to push a pin through to identify the position on an aerial photo and then to label the back with a reference number. Geoscience Australia has a large collection of these annotated photos.

In addition to the above the position would often be given in terms of a rough distance and direction from a known point such as a homestead or significant landmark.

N.T. KULGERA 4ML K2/5081 PT.6073 KERNOT RANGE
K1/5093 PT. 6081 12.MLS. WEST OF ANGRAS DOWNS
K2/5081 PT. 6102 8 MLS. S.W. OF ANGRAS DOWNS

QD. MUNDUBBERA 4M. AIR PHOTO. 1/50/303 DELUSION CREEK ON ROAD TO MODOOROORA
1/50/314 3 MILES WEST OF NT VIEW
1/52/322 2.5 MILE NORTH OF ALANDALE

Note books

When undertaking field work the geologist would maintain a set of notes which would then be lodged on their return. "Field No." refers to the field notebook maintained by the geologist.

The geologist would note information about samples taken, observations of the local terrain along with other pertinent information

| Field No. |
|------------|
| GRB 1048 F |
| GRB 1048 F |
| GRB 1048 G |